

TIPS & INFORMATION

GUEST RELATIONS

Please visit Guest Relations located inside City Hall for:

- Questions and Concerns
- Ticket Upgrades
- Separated Guest Assistance
- Lost and Found
- Services for Guests with Disabilities



Services for International Guests are available at Guest Relations.

Los Servicios para huéspedes internacionales están disponibles en la oficina de Guest Relations.

Des services pour les visiteurs internationaux sont disponibles au Guest Relations.

Serviços para hóspedes internacionais estão disponíveis no Guest Relations.

Dienste für internationale Gäste sind bei der Guest Relations erhältlich.

ゲストリレーションにて世界各国からのゲストの皆様向けのサービスをご案内しております。



Please look for the recycling containers throughout the Park and join us in our commitment to the environment.



Please do not feed the birds or other animals, and do not throw objects (including coins) into the water.

LEAVING THE PARK? All Guests who wish to leave the Park and return later in the day may do so by presenting their original admission media.

- To get to the **Magic Kingdom® Park parking lot**, take a Monorail or Ferryboat to the Transportation and Ticket Center and then a Parking Tram.
- To get to **Epcot®**, take a Monorail or Ferryboat to the Transportation and Ticket Center and then a Monorail to **Epcot**.
- To get to **Disney's Hollywood Studios®** or **Disney's Animal Kingdom® Theme Park**, take a Bus located outside the front of the Park.
- To get to **Disney Springs™** between the hours of 4:00pm-11:00pm, take a Bus located outside the front of the Park. At all other times, take a Bus to any **Disney Resort** hotel, and then another Bus to **Disney Springs**.
- To get to **Disney's Polynesian Village Resort** or **Disney's Grand Floridian Resort & Spa**, take the Resort Monorail or Watercraft Service.
- To get to **Disney's Contemporary Resort** take the Resort Monorail or the designated walking path.
- To get to **Disney's Wilderness Lodge**, take Watercraft Service or a Bus located outside the front of the Park. For **Disney's Fort Wilderness Resort & Campground**, take Watercraft Service located outside the front of the Park.
- To get to all other **Disney Resort** hotels, take a Bus located outside the front of the Park.

Ask us about staying at a **Disney Resort** hotel tonight. Call 407-WDISNEY (934-7639).

PARK RULES

To provide a comfortable, safe, and enjoyable experience for our Guests, please comply with Park rules, signs and instructions including:

- All bags are subject to inspection prior to admission.
- Proper attire is required.
- Smoking is allowed only in designated areas.
- Weapons are strictly prohibited.

Additional details and a complete listing of Park rules are available at Guest Relations or disneyworld.com/parkrules.



DISNEY WILD ABOUT SAFETY® TIPS

As Timon and Pumbaa would say, "Watch over your herd!" Download the Disney

Wild About Safety mobile app or visit disneywildaboutsafety.com for more safety tips and fun games.



Capture every moment from under the sea to Space Mountain®

Disney PhotoPass® Service lets you capture your vacation memories in great photos – and get everyone in the shot! When you purchase Memory Maker you get unlimited digital downloads of all your memories, including select attraction photos and video, plus extras like Animated Magic Shots. All for one price!

Purchase Memory Maker today at Box Office Gifts on Main Street, U.S.A.® (inside Town Square Theater).



Look for the **Disney Vacation Club** icon on your map.



Payment Options

Walt Disney World® Resort accepts Disney Visa® Cards, Disney Rewards® Redemption Card, Disney Gift Card, Visa®, MasterCard®, Discover®, American Express®, Diners Club®, JCB®, traveler's checks, cash and Disney Dollars.

©Disney

English GUIDEMAP

Magic Kingdom



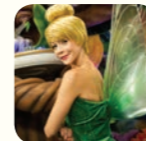
Move it! Shake it! Dance and Play it!



Download My Disney Experience from an app store to access real-time Park information. Or visit MyDisneyExperience.com on your mobile browser.

Follow @WDWToday and Tweet with us!

Fantasy Reigns



ENTERTAINMENT Meet Tinker Bell at Town Square Theater FP+

Spend some time with your favorite pint-sized pixie when you magically shrink down to the size of a fairy and enter this beautiful setting filled with a collection of Tink's treasures!

Wishes nighttime spectacular Presented by Pandora Jewelry

Make a wish as the voices of beloved Disney Characters narrate this spectacular fireworks show that can be seen throughout the entire Park! See *Times Guide*.

SHOPPING

Throughout *Magic Kingdom*® Park, you'll find unique shopping experiences. From apparel and toys, to embroidered Mickey Ear hats, to Cinderella Castle and Monorail play sets, you can always remember the magic. You can also download the Shop Disney Parks mobile app to search for and purchase authentic *Walt Disney World*® Resort merchandise.

Merchandise Package Delivery and Pickup

Instead of carrying your purchases all day, have them delivered to the Main Street Chamber of Commerce near the Park entrance and pick them up as you exit the Park. Please allow three hours for delivery to the front of the Park. If you prefer, have your purchases delivered directly to your *Disney Resort* hotel. See a *Merchandise Cast Member* for more details.

DINING

Dining Reservations

Table-Service restaurants book quickly, so please make reservations through the *My Disney Experience* app, at disneyworld.com/dine, by calling 407-WDW-DINE (939-3463), or for additional assistance by visiting any Guest Relations location. *Most reservations must be canceled at least one day prior to the date of your reservation or a per person cancellation charge will be incurred (policies and charges vary by location; please confirm before finalizing your reservation).*

Mickey Check

Look for the Mickey Check on menus throughout the *Walt Disney World* Resort for kids' meals and other items that meet Disney Nutrition Guidelines. *For more information, please visit disneymickeycheck.com.*

For special dietary needs, please see a restaurant Cast Member upon arrival.

Don't Forget Your Times Guide!

Pick up the Times Guide to get additional information regarding shows, entertainment, operating hours and even character appearances!

- Entertainment, outdoor shows and other Guest offerings are subject to change without notice.
- Theater venues have limited capacity and may fill up before show time. Please ensure your entire party is together prior to entering the facility.
- Some walkways in the Park may close periodically.

My Disney Experience

The official mobile app that's the one-stop shop for your **Walt Disney World®** vacation!

Download it for FREE today*.

*App includes products for purchase.



You can also visit MyDisneyExperience.com on your mobile browser.

Wi-Fi is available in most areas.



Modify your **Disney FastPass+™** experiences on the go.

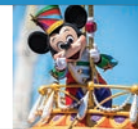


Preview and purchase your **Disney PhotoPass®** photos.



Use **Smart Maps** to explore the fun.

Buy **Walt Disney World** Theme Park tickets.†



Availability subject to device limitations and features may vary by device or service provider. Message and data rates may apply. Coverage and app stores not available everywhere. If you're under 18, get your parent's permission first.

** Valid Theme Park admission and online registration required. *Disney FastPass+* attractions and entertainment experiences, the number of selections you can make and available arrival windows are limited.

† In-app ticket purchases not available to residents of all countries.

Apple® and the Apple logo are trademarks of Apple Inc., registered in the U.S. and other countries. App Store is a service mark of Apple Inc. Google Play is a trademark of Google Inc. ©Disney MMPLUS-16-49747



MIX Paper from responsible sources FSC® C007828

