

TIPS & INFORMATION

GUEST RELATIONS

Please visit Guest Relations located inside City Hall for:

- Questions and Concerns
- Ticket Upgrades
- Separated Guest Assistance
- Lost and Found
- Services for Guests with Disabilities



Services for International Guests are available at Guest Relations.

Los Servicios para huéspedes internacionales están disponibles en la oficina de Guest Relations.

Des services pour les visiteurs internationaux sont disponibles au Guest Relations.

Serviços para visitantes internacionais estão disponíveis no Guest Relations.

Dienste für internationale Gäste sind bei der Guest Relations erhältlich.

ゲストリレーションにて世界各国からのゲストの皆様向けのサービスをご案内しております。



Please look for the recycling containers throughout the Park and join us in our commitment to the environment.



Please do not feed the birds or other animals, and do not throw objects (including coins) into the water.

LEAVING THE PARK? All Guests who wish to leave the Park and return later in the day may do so by presenting their original admission media.

- To get to the **Magic Kingdom® Park parking lot**, take a Monorail or Ferryboat to the Transportation and Ticket Center and then a Parking Tram.
- To get to **Epcot®**, take a Monorail or Ferryboat to the Transportation and Ticket Center and then a Monorail to *Epcot*.
- To get to **Disney's Hollywood Studios®** or **Disney's Animal Kingdom® Theme Park**, take a Bus located outside the front of the Park.
- To get to the **Disney Springs™**, take Resort Transportation to any *Disney Resort* hotel, and then another Bus to the *Disney Springs*.
- To get to **Disney's Typhoon Lagoon Water Park** before 2:00pm, take Resort Transportation to any *Disney Resort* hotel, and then a Bus to *Disney Springs* and *Disney's Typhoon Lagoon Water Park*. After 2:00pm, take a Monorail or Ferryboat to the Transportation and Ticket Center and then a Monorail to *Epcot*. Once at *Epcot*, take a Bus to *Disney's Typhoon Lagoon Water Park*.
- To get to **Disney's Blizzard Beach Water Park**, take Resort Transportation to any *Disney Resort* hotel, and then a Bus to *Disney's Blizzard Beach Water Park*.
- To get to **Disney's Polynesian Village Resort** or **Disney's Grand Floridian Resort & Spa**, take the Resort Monorail or Watercraft Service.
- To get to **Disney's Contemporary Resort** take the Resort Monorail or the designated walking path.
- For **Disney's Wilderness Lodge**, take Watercraft Service or a Bus. For **Disney's Fort Wilderness Resort & Campground**, take Watercraft Service.
- To get to all other **Disney Resort hotels**, take a Bus located outside the front of the Park.

PARK RULES

To provide a comfortable, safe, and enjoyable experience for our Guests, please comply with Park rules, signs and instructions including:

- All bags are subject to inspection prior to admission.
- Proper attire is required.
- Smoking is allowed only in designated areas.
- Weapons are strictly prohibited.

Additional details and a complete listing of Park rules are available at Guest Relations or disneyworld.com/parkrules.



DISNEY WILD ABOUT SAFETY® TIPS

As Timon and Pumbaa would say, "Watch over your herd!" Download the Disney Wild About Safety mobile app or visit disneywildaboutsafety.com for more safety tips and fun games.



Capture every moment from under the sea to Space Mountain®

Disney PhotoPass® Service lets you capture your vacation memories in great photos – and get everyone in the shot! When you purchase Memory Maker you get unlimited digital downloads of all your memories, including select attraction photos and video, plus extras like Animated Magic Shots. All for one price!



Purchase Memory Maker today at Box Office Gifts on Main Street, U.S.A.® (inside Town Square Theater).

©Disney
Memory Maker includes photos taken during the Memory Maker window and linked to the Memory Maker guest's Disney account. A Magic Band is required to receive certain attraction photos and other digital content. Photos and other digital content will expire pursuant to the expiration policy at <https://mydisneyphotopass.disney.go.com/help-and-support>. Valid theme park admission required for certain photo locations. Memory Maker is subject to Memory Maker terms and, if applicable, Family & Friends terms at <http://disneyworld.disney.go.com/media/park-experience-terms-and-conditions.html>. Not responsible for missing, lost or damaged photos.



Look for the Disney Vacation Club icon on your map.



Payment Options

Walt Disney World® Resort accepts Disney Visa® Cards, Disney Rewards® Redemption Card, Disney Gift Card, Visa®, MasterCard®, Discover®, American Express®, Diners Club®, JCB®, traveler's checks, cash and Disney Dollars.

©Disney

English

GUIDEMAP

Magic Kingdom®

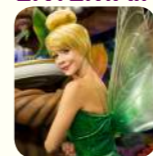


Download the My Disney Experience app from an app store or by scanning this code to access real-time Park information (details inside). Or visit MyDisneyExperience.com on your mobile browser.

Follow @WDWToday and Tweet with us!

Fantasy Reigns

ENTERTAINMENT



MEET TINKER BELL AT TOWN SQUARE THEATER FP+
Spend some time with your favorite pint-sized pixie when you magically shrink down to the size of a fairy and enter this beautiful setting filled with a collection of Tink's treasures!

MAIN STREET ELECTRICAL PARADE FP+

Delight in this legendary parade of glowing, spinning, gliding floats filled with your favorite Disney Characters and dancers. Performed on select nights. See *Times Guide*.

WISHES NIGHTIME SPECTACULAR FP+

Presented by **PANDORA Jewelry**
Make a wish as the voices of beloved Disney Characters narrate this spectacular fireworks show that can be seen throughout the entire Park! See *Times Guide*.



CELEBRATE THE MAGIC

At night, keep your eyes on Cinderella Castle to relive the artistry and music of some favorite Disney stories. With help from Tinker Bell and her pixie dust, Cinderella Castle transforms into a spectacular piece of art, making it the backdrop for a stunning, immersive journey. See *Times Guide*.

SHOPPING

Throughout *Magic Kingdom®* Park, you'll find unique shopping experiences. From apparel and toys, to embroidered Mickey Ear hats, to Cinderella Castle and Monorail play sets, you can always remember the magic.

MERCHANDISE PACKAGE DELIVERY AND PICKUP

Instead of carrying your purchases all day, have them delivered to the Main Street Chamber of Commerce near the Park entrance and pick them up as you exit the Park. Please allow three hours for delivery to the front of the Park. If you prefer, have your purchases delivered directly to your *Disney Resort* hotel. See a *Merchandise Cast Member* for more details.

DINING DINING RESERVATIONS

Table-Service restaurants book quickly, so please make reservations through the *My Disney Experience* app, at disneyworld.com/dine, by calling 407-WDW-DINE (939-3463), or for additional assistance by visiting any Guest Relations location. *Most reservations must be canceled at least one day prior to the date of your reservation or a per person cancellation charge will be incurred (policies and charges vary by location; please confirm before finalizing your reservation).*

MICKEY CHECK

Look for the Mickey Check on menus throughout the *Walt Disney World®* Resort for kids' meals and other items that meet Disney Nutrition Guidelines. For more information, please visit disneymickeycheck.com.

For special dietary needs, please see a restaurant manager or chef.



Don't Forget Your Times Guide!

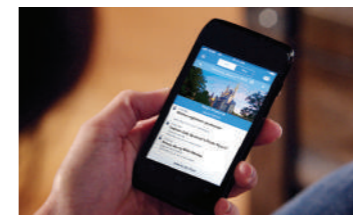
Pick up the Times Guide to get additional information regarding shows, entertainment, operating hours and even character appearances!

- Entertainment, outdoor shows and other Guest offerings are subject to change without notice.
- Theater venues have limited capacity and may fill up before show time. Please ensure your entire party is together prior to entering the facility.
- Some walkways in the Park may close periodically.

Select, Reserve, Go, Repeat!

Save time with **DisneyFastPass+**

With *Disney FastPass+** service, you can reserve access to some must-do fun and even make changes on the go with the *My Disney Experience* app**.



Select up to three *Disney FastPass+* experiences in one Theme Park per day.



Head to your chosen *FastPass+* experience entrances with your *MagicBand* or card during your designated arrival windows.



Visit a *FastPass+* kiosk after you redeem your initial selections to reserve additional experiences.

To get started, download the *My Disney Experience* app for free or look for this icon on the map and go! **FP+**

You can also visit MyDisneyExperience.com on your mobile browser. Wi-Fi is available in most areas. *Valid Theme Park admission and online registration required. *Disney FastPass+* attractions and entertainment experiences, the number of selections you can make and available arrival windows are limited. **Availability subject to handset limitations and features may vary by handset or service provider. Message, data and roaming rates may apply. Coverage not available everywhere. If you're under 18, get your parent's permission first.

©Disney MMPLUS-15-39361



MIX Paper from responsible sources FSC® C007828

FP+ RESERVE ACCESS TO SOME OF YOUR MUST-DO FUN!

Select up to three FastPass+ experiences by visiting a FastPass+ kiosk identified on the map with FP+. Once you redeem your initial selections, return for information about availability and selecting additional experiences.

Complimentary Wi-Fi
Wi-Fi is available in most areas. Some attractions and shows may have limited availability.

FRONTIERLAND

Liberty Square

Fantasyland

Tomorrowland

ADVENTURELAND

Main Street, U.S.A.

Entrance

ENTERTAINMENT

- Move It! Shake It! Dance & Play It! Street Party
- Disney Festival of Fantasy Parade FP+
- Main Street Electrical Parade FP+
- Celebrate the Magic
- Wishes nighttime spectacular FP+ Presented by PANDORA Jewelry

Pick up a Times Guide for more information.

Express Monorail to Parking Lot

Monorail to Magic Kingdom® Resorts

Boat to Magic Kingdom Resorts

Ferryboat to Parking Lot

Buses to Disney Resorts

LEGEND

Symbols on Map

- Amenities**
- Restrooms
- Accessible Restrooms
- Companion Restrooms
- First Aid* Presented by Florida Hospital
- EpiPen® EpiPen® (epinephrine injection) Auto-injector
- Guest Relations
- ATMs Presented by Chase
- Automated External Defibrillators

- Smoking Locations
- Baby Care Center
- Stroller Rentals
- Wheelchair Rentals
- Locker Rentals
- Service Animal Relief Areas
- Disney PhotoPass® Photographers
- Memory Maker Sales Center
- Nikon® Picture Spot

Park Information

- Character Greetings
- Disney Vacation Club® Information Center
- Parade Route
- Parade Viewing for Guests with Disabilities
- FastPass+ kiosks available in English, Spanish and Portuguese.

*Emergency services available by calling 911.

Symbols in List

- Attraction/Show Considerations**
- Guest Relations
- FastPass+ experience
- Physical Considerations
- Minimum Height Requirement
- May be frightening for children
- Must be ambulatory
- May remain in wheelchair/ECV
- Must transfer from wheelchair/ECV
- Must transfer to standard wheelchair

Devices Available at Guest Relations

- Must transfer to standard wheelchair, and then to ride vehicle
- Reflective Captioning
- Sign Language (available Mondays and Thursdays)
- Automated External Defibrillators
- Handheld Captioning
- Video Captioning
- Audio Description
- Shopping

Dining

All dining locations listed accept the Disney dining plans. Reservations recommended. Call 407-WDW-DINE (939-3463).

B - Breakfast L - Lunch
D - Dinner S - Snack
\$ = \$14.99 and less per adult
\$\$ = \$15-\$29.99 per adult
\$\$\$ = \$30-\$59.99 per adult
See disneydiningpricinginfo.com for pricing details.

Main Street, U.S.A.®

- 1 **Walt Disney World® Railroad** Ride around the globe on the iconic Main Street, U.S.A. Railroad.
- 2 **City Hall** Guest Relations, Information and Lost and Found.
- 3 **Town Square Theater FP+** Meet Mickey Mouse and Tinker Bell!
- 4 **Sorcerers of the Magic Kingdom** Search for clues throughout the Park to defeat the Disney Villains. Interactive adventure. At your own pace. Additional starting location in Liberty Square.
- 5 **Harmony Barber Shop** Call to make an appointment. 407-WDW-PLAY (939-7529).
- 6 **Tony's Town Square Restaurant** Italian cuisine, featuring pastas, seafood and salads.
- 7 **Main Street Bakery SB** Starbucks® espresso, Artisan breakfast sandwiches and house-made Disney pastries.
- 8 **Plaza Ice Cream Parlor** Hosted by Edy's® Hand-scooped ice cream and waffle-bowl sundaes.
- 9 **The Plaza Restaurant** Sandwiches, burgers and sundaes.
- 10 **Casey's Corner** Hosted by Coca-Cola® Specialty hot dogs and French fries.
- 11 **The Crystal Palace, A Buffet with Character** Character buffet. American cuisine. Breakfast hosted by Kellogg's®.
- 12 **Main Street Chamber of Commerce** Merchandise Package Pickup.
- 13 **Emporium** One-stop shopping destination for Disney Character gifts and Park souvenirs.

ADVENTURELAND®

- 14 **Swiss Family Treehouse** Explore the treehouse inspired by the classic Disney film.
- 15 **The Magic Carpets of Aladdin® FP+** Fly high on a magic carpet above Adventureland.
- 16 **Walt Disney's Enchanted Tiki Room** Watch tropical birds and colorful flowers come to life.
- 17 **Jungle Cruise® FP+** Set sail on a whimsical cruise through exotic rivers.
- 18 **Pirates of the Caribbean® FP+** Embark on a voyage to a time when pirates ruled the seas.
- 19 **A Pirate's Adventure~Treasures of the Seven Seas** Discover mystic treasure in this self-guided quest through Adventureland! Interactive adventure. At your own pace. See a Cast Member for assistance.
- 20 **Sunshine Tree Terrace** Citrus swirl, slush and snacks.

FRONTIERLAND

- 21 **NEW! Jungle Navigation Co. Ltd. Skipper Canteen** Bold, flavorful cuisine of Asia, South America and Africa.
- 22 **Aloha Isle Hosted by Dole®** Soft-serve Ice Cream and fresh pineapple.
- 23 **Tortuga Tavern** Barbeque sandwiches and salads. Open seasonally.
- 24 **The Pirates League** Transform into a pirate. Ages 3 and up. Call to make an appointment. 407-939-2739. Separately priced experience.
- 25 **Splash Mountain® FP+** Enjoy a thrilling log flume ride based on "Song of the South."
- 26 **Walt Disney World Railroad** Ride a vintage train to Fantasyland and Main Street, U.S.A.
- 27 **Tom Sawyer Island** Brave this Mark Twain-inspired hideaway.
- 28 **Big Thunder Mountain Railroad® FP+** Ride through a gold-mining town on a runaway train.
- 29 **Country Bear Jamboree** Have a knee-slappin' time with these singing bears.
- 30 **Golden Oak Outpost** Specialty waffle fries and sweet potato nuggets. Open seasonally.
- 31 **Pecos Bill Tall Tale Inn and Cafe** Fajitas, burritos and rice bowls.
- 32 **Westward Ho** Snacks and frozen lemonade.
- 33 **Frontierland Turkey Leg Wagon** Turkey legs.
- 34 **Frontier Trading Post** Disney Trading Pins and accessories.

Liberty Square

- 35 **Liberty Square Riverboat** Cruise the Rivers of America aboard the Liberty Belle.
- 36 **The Hall of Presidents** Behold all the U.S. Presidents on stage together. 22 minutes.
- 37 **Haunted Mansion® FP+** Take a spine-tingling tour of this dark, haunted estate.
- 38 **The Diamond Horseshoe** Open seasonally.
- 39 **Liberty Tree Tavern** Hosted by Ocean Spray® Craisins® brand L \$ \$ D \$ \$ \$ Roast turkey, carved beef, sandwiches, salads and stuffing.
- 40 **Sleepy Hollow** Funnel cakes, ice cream and waffle sandwiches.
- 41 **Liberty Square Market** Hosted by Ocean Spray® Craisins® brand S \$ Frozen beverages, fruit and snacks.
- 42 **Columbia Harbour House** Fish, shrimp, chicken, salads and sandwiches.

Fantasyland

- 43 **"it's a small world"® FP+** Take a boat tour around the globe.
- 44 **Peter Pan's Flight® FP+** Fly with Peter Pan aboard a magical ship.
- 45 **Mickey's PhilharMagic® FP+** Get swept away in this 3-D movie.
- 46 **Prince Charming Regal Carrousel** Ride this classic attraction.
- 47 **Enchanted Tales with Belle FP+** Enjoy an interactive story adventure featuring Belle, Lumiere and possibly even you.
- 48 **Princess Fairytale Hall FP+** Meet your choice of Anna and Elsa or Cinderella and Rapunzel.
- 49 **Fairytale Garden** Encounter a fairytale friend in this garden setting.
- 50 **The Many Adventures of Winnie the Pooh FP+** Travel through the Hundred Acre Wood in an oversized Hunny Pot.
- 51 **Mad Tea Party FP+** Spin around and around in a giant teacup.
- 52 **Seven Dwarfs Mine Train FP+** Race and rock through a diamond mine on this family coaster. Expectant mothers should not ride.
- 53 **Under the Sea~Journey of The Little Mermaid FP+** Descend below the waves for a splashy musical adventure.
- 54 **Ariel's Grotto FP+** Meet The Little Mermaid in her retreat under the sea.
- 55 **Dumbo the Flying Elephant® FP+** Ride your favorite flying elephant.
- 56 **Casey Jr. Splash 'N' Soak Station** Cool off in this whimsical water play area.
- 57 **Pete's Silly Sideshow** Meet Donald, Daisy, Goofy & Minnie!
- 58 **Walt Disney World Railroad** Ride a vintage train to Main Street, U.S.A. and Frontierland.
- 59 **The Barnstormer FP+** Take flight on this thrilling junior roller coaster. Expectant mothers should not ride.
- 60 **Pinocchio Village Haus** Flatbreads, chicken breast nuggets and salads.
- 61 **Cinderella's Royal Table** Character dining with Disney Princesses. American cuisine.
- 62 **The Friar's Nook** Artisan macaroni & cheese, hot dogs, potato chips and frozen beverages.
- 63 **Storybook Treats** Ice cream.
- 64 **Be Our Guest Restaurant** Open-faced bacon and egg sandwich and croissant doughnut. LD: Sandwiches, entrées, French onion soup and salads.

Tomorrowland®

- 65 **Gaston's Tavern** LeFou's Brew - Specialty Slush, Tavern beef stew, cinnamon rolls, fruit and hummus.
- 66 **Cheshire Café** Hosted by Minute Maid® Iced coffee, frozen lemonade and snacks.
- 67 **Prince Eric's Village Market** Healthy options including fruit, hummus and all-natural lemonade.
- 68 **Bibbidi Bobbidi Boutique** Transform into a Disney Princess or a Valiant Knight. Ages 3-12. Call 407-939-7895 to make an appointment. Separately priced experience.
- 69 **Big Top Souvenirs** Handmade sweet treats, Disney Character gifts and Park souvenirs.
- 70 **Tomorrowland Speedway FP+** Take a ride in your very own hot rod.
- 71 **Space Mountain® FP+** Blast off on this coaster ride in the dark.
- 72 **Astro Orbiter®** Pilot your own spaceship high above Tomorrowland.
- 73 **Tomorrowland Transit Authority PeopleMover** Presented by Alamo® Ride this emission-free mass transit system of the future.
- 74 **Walt Disney's Carousel of Progress** Travel through the 20th century to see how technology has improved our way of life.
- 75 **Buzz Lightyear's Space Ranger Spin® FP+** Fire lasers to defeat Zurg in this shooting gallery-inspired game.
- 76 **Monsters, Inc. Laugh Floor® FP+** Discover the power of laughter in this live comedy show.
- 77 **Stitch's Great Escape!™** Interact with a mischievous Stitch in this dark theater-in-the-round experience.
- 78 **Cosmic Ray's Starlight Café** Hosted by Coca-Cola® Burgers, chicken breast nuggets, rotisserie chicken, sandwiches and salads.
- 79 **Auntie Gravity's Galactic Goodies** Ice cream, smoothies, sundaes and iced coffee.
- 80 **Cool Ship** Hosted by Coca-Cola® Snacks and beverages.
- 81 **The Lunching Pad** Hot dogs, pretzels and frozen Coca-Cola®.
- 82 **Tomorrowland Terrace Restaurant** Burgers, sandwiches and salads. Open seasonally.