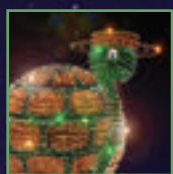


Disney Magic you won't want to miss!

(See Times Guide for days and times.)



Main Street Electrical Parade

Parade Route

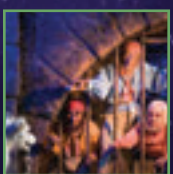
Delight in the return of this classic nighttime parade filled with light-covered floats, favorite Disney Characters, and catchy music.



Space Mountain

Tomorrowland

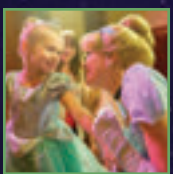
Blast off on a high-speed journey into the darkest reaches of outer space.



Pirates of the Caribbean

New Orleans Square

Set sail on a swashbuckling voyage to a long-forgotten time and place when pirates wrought havoc on the high seas.



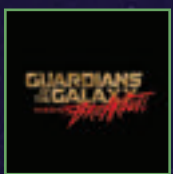
Fantasy Faire

Fantasyland

Meet Disney Princesses at Royal Hall, see live shows, shop, snack and revel in the Fantasy Faire enchantment.



Separate park admission required



Guardians of the Galaxy - Mission: BREAKOUT!

Hollywood Land

Join Rocket on a thrilling mission to rescue the Guardians of the Galaxy from The Collector's fortress!



World of Color

Paradise Bay

Water, light and fire intertwine with Disney storytelling to create a magnificent nighttime spectacular.



Turn today's ticket into a year of magic*!

Disneyland RESORT

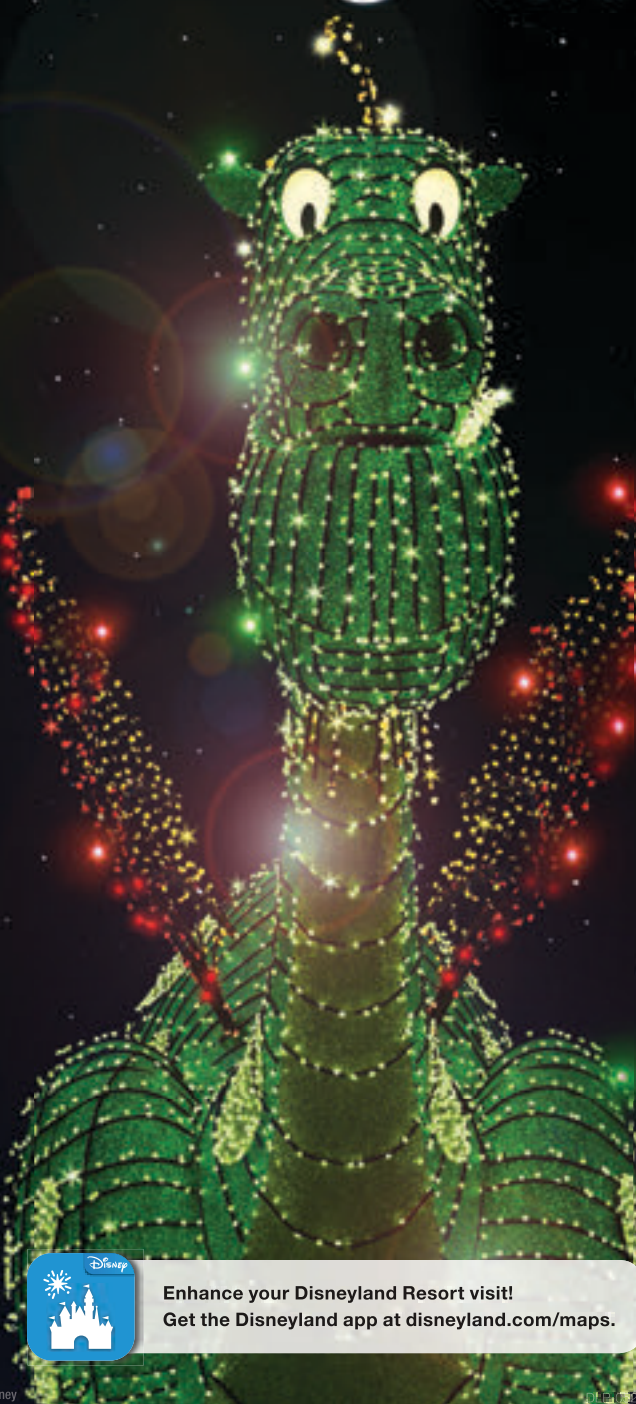
*To upgrade, your ticket must be presented at a Disneyland® Resort ticket booth on or before the last valid day of the ticket; a fully used or expired ticket is ineligible for an upgrade. Visit a ticket booth for details. Passport types are limited in quantity, and not all Passport types may be available at any given time. Passports do not guarantee Theme Park admission, especially during high attendance periods. Excludes activities/events separately priced. Visit a ticket booth or Disneyland.com/AP for Annual Passport Terms and Conditions, Blockout Dates and other applicable restrictions. All information, including Blockout Dates, benefits and prices, is subject to change without notice.

©Disney DLRAP-17-55302

Visit any ticket booth to apply the value of your ticket toward an Annual Passport.

GUIDEMAP

Disneyland Park



Enhance your Disneyland Resort visit!
Get the Disneyland app at disneyland.com/maps.

©Disney

DLRAP-17-ENG

Park rules

Please comply with park rules, signs and instructions, including:

- All bags are subject to inspection prior to admission
- Proper attire is required
- Smoking is allowed only in designated areas
- Weapons are strictly prohibited

Additional details and a complete listing of park rules are available at Guest Relations or Disneyland.com/ParkRules

Special considerations for attractions

SAFETY: Please abide by all safety warnings and notices.

- Supervise children at all times. Children under age 7 years must be accompanied by a person age 14 years or older.
- For your safety while on attractions, remain seated with hands, arms, feet and legs inside the vehicle. Supervise children.

Physical considerations on designated attractions:

WARNING! For your safety, you should be in good health and free from high blood pressure, heart, back or neck problems, motion sickness, or other conditions that could be aggravated by this adventure. Expectant mothers should not ride.

Here are 4 good ways to safer days!

- 1 No stampeding** (Don't run)
- 2 Keep your arms, hooves, tusks and tails inside ride vehicles** (and your hands, feet and legs)
- 3 On rides, stay seated with your tail down** (You get this one, right?)
- 4 Keep your paws behind the yellow line** (Don't cross the yellow safety lines at attractions)



FASTPASS Cut the wait time in 3 easy steps:

FP Check your Times Guide for a list of Disney FASTPASS® attractions. Ready to use the FASTPASS® service on another attraction? Look at the bottom of your current FASTPASS® ticket to find out when you can get another.

- 1** Each member of your party inserts his or her park ticket into the FASTPASS® kiosk.
- 2** You'll receive a FASTPASS® ticket with a return time so you can go play in the park instead of waiting in line.
- 3** Come back during your return time and hop on the attraction with less waiting.



Capturing the magic is as easy as 1-2-3!



- 1** Get a Disney PhotoPass® Card from any Disney Photographer.
- 2** Give your card to Photographers all over the park and load it up with pics!
- 3** Visit DisneyPhotoPass.com* to preview, share and order your Disney PhotoPass® photos. Photo pickup and Express Photo Upload are also available at Main Street Photo Supply Co.
***Photos available online for 45 days. Online registration required.**

Download the Disneyland® App!



Get wait times, check entertainment schedules, make dining reservations and more! Learn about the app at disneyland.com/maps.

Message, data and roaming rates may apply. Availability subject to handset limitations and features may vary by handset or service provider. Coverage and app stores not available everywhere. If you're under 18, get your parents' permission first.



Smoking For the comfort of all our Guests, smoking is allowed in designated areas only.



Mickey Check Look for this symbol at various locations on kids' meals and other items that meet Disney Nutrition Guidelines. Visit www.disnemicheck.com for more information.



Be Green! Recycling containers throughout the parks now accept plastic, paper, cans & glass.



Package Check Service Shop and check your purchases for pickup later in the day at these locations: Stroller Shop (Main Entrance), The Star Trader (Tomorrowland) or Pioneer Mercantile (Frontierland). Resort Hotel Guests may have purchases delivered to Bell Services for next-day pickup after 7 a.m. Certain restrictions apply.



Resort Lost and Found Inquire at Resort Lost and Found, located west of the Disneyland® Park Main Entrance.



Payment Options The Disneyland® Resort accepts Disney Visa® Cards, Disney Rewards® Redemption Card, Disney Gift Card, Visa®, MasterCard®, Discover®, American Express®, Diners Club®, JCB®, traveler's checks, cash and Disney Dollars.

Services for Guests with Disabilities A guide for Guests with Disabilities is available at Information Centers (i on the map). For more information about available services, visit City Hall in Disneyland® Park.

Sundries Available at Emporium on Main Street, U.S.A.

Disney Pins At 20th Century Music Company, Westward Ho Trading Company, and Little Green Men Store Command



Don't miss a memory!

Link, Preview and Purchase your Photos from the Disneyland app.*

Download the Disneyland app today at Disneyland.com/magic.

*Registration required



Strollers Rentals are available in limited quantities. Please take all personal belongings with you when leaving your stroller unattended.



Wheelchairs A limited number of wheelchairs and Electric Conveyance Vehicles are available to rent. Rental fee and refundable deposit required. Guests must be at least 18 years of age to rent or operate an Electric Conveyance Vehicle.



Disneyland® Kennel Club Located east of the Disneyland® Park Main Entrance. No overnight facilities.



Charging Lockers Rentals available to secure and charge many personal electronic devices.



Pre-Charged Battery Kiosk Guests have the opportunity to swap or purchase a pre-charged portable battery and connecting cords for their mobile device.



Travel Tips Should your vehicle become disabled during your visit, the Automobile Club of Southern California provides complimentary towing and flat-tire services to nonmembers during park hours.



Use the *Disney Gift Card* instead of carrying cash. It's easy and can be used throughout the resort. Start with any amount from \$15 to \$1,000, and reload it at any time. Available for purchase throughout the resort. Visit DisneyGiftCard.com for terms.

Any time you see someone with a Disney nametag, just ask! They're happy to answer your questions.

Information subject to change without notice.

Main Street, U.S.A.

ATTRACTIONS

- 1 **Disneyland® Railroad** Returns 2017

Main Street Vehicles

(One-way transportation only)

- 2 **Horseless Carriage**
- 3 **Fire Engine**
- 4 **Horse-Drawn Streetcars**
- 5 **Omnibus**

Opera House

- 6 **Disney Gallery**
- 7 **The Disneyland® Story** presenting Great Moments with Mr. Lincoln

- 8 **Main Street Cinema**

DISNEY DINING

- A** **Carnation Café** Table-service – breakfast, fried pickles, burgers, salads, entrées, specialty cakes and sundaes.
- B** **Gibson Girl Ice Cream Parlor** hosted by Dreyer's™.
- C** **Refreshment Corner** hosted by Coca-Cola®. Hot dogs, chili and cold Coke.
- D** **Market House** Starbucks® Espresso and Specialty Beverages, Artisan breakfast sandwiches and pastries.
- E** **Plaza Inn** "Minnie & Friends – Breakfast in the Park," hosted by Kellogg's®.
- Lunch and dinner featuring homestyle favorites.
- F** **Jolly Holiday Bakery Café** Baked goods, sandwiches, salads and specialty drinks.

Adventureland

ATTRACTIONS

- 9 **Enchanted Tiki Room** presented by Dole®. (Continuous shows)
- 10 **Jungle Cruise**
- 11 **Indiana Jones™ Adventure** (Minimum height 46"/117 cm)
- 12 **Tarzan's Treehouse™***

DISNEY DINING

- G** **Tiki Juice Bar** hosted by Dole®.
- H** **Aladdin's Oasis**
- I** **Bengal Barbecue** Barbecue kabobs and coffee drinks.

New Orleans Square

ATTRACTIONS

- 13 **Pirates of the Caribbean**
- 14 **Disneyland® Railroad** Returns 2017

Main Street Vehicles

(One-way transportation only)

- 2 **Horseless Carriage**
- 3 **Fire Engine**
- 4 **Horse-Drawn Streetcars**
- 5 **Omnibus**

Opera House

- 6 **Disney Gallery**
- 7 **The Disneyland® Story** presenting Great Moments with Mr. Lincoln

Opera House

- 8 **Main Street Cinema**

DISNEY DINING

- J** **Royal Street Veranda** Chowder and gumbo in bread boules, New Orleans-style fritters, plus specialty coffees.
- K** **Blue Bayou Restaurant** Table-service – seafood, chicken and beef dinners, plus the famous Monte Cristo sandwich at lunch.
- L** **Café Orléans** Table-service – lunch and dinner, soups, salads, gourmet sandwiches and crepes.
- M** **French Market Restaurant** French quarter chicken, jambalaya, Cajun meatloaf, French dip, hand tossed salads and desserts.

Critter Country

ATTRACTIONS

- 16 **Splash Mountain** (Minimum height 40"/102 cm)
- 17 **The Many Adventures of Winnie the Pooh**

DISNEY DINING

- N** **Harbour Galley** Soup in bread boules, lobster rolls, salads, and drinks.
- O** **Hungry Bear Restaurant** Burgers, chicken and salads.

Frontierland

ATTRACTIONS

- 18 **Pirates Lair on Tom Sawyer Island***
- 19 **The Golden Horseshoe Stage** (See Times Guide for show times)
- 20 **Frontierland Shootin' Exposition**
- 21 **Mark Twain Riverboat***
- 22 **Sailing Ship Columbia*** (Operates weekends and select seasons only)
- 23 **Big Thunder Mountain Railroad** (Minimum height 40"/102 cm)

DISNEY DINING

- P** **River Belle Terrace** Table service – BBQ ribs, salads, sandwiches and desserts.
- Q** **Stage Door Café** Corn dogs, fish and chips, and chicken nuggets.
- R** **The Golden Horseshoe** Chicken nuggets, chili, fish and chips, and tasty ice cream specialties.
- S** **Rancho del Zocalo Restaurante** Breakfast, salads, tacos, burritos and Costena Grill specialties.
- T** **Ship to Shore Marketplace** Fresh fruit, turkey legs, chimichangas, and frozen beverages.

Fantasyland

ATTRACTIONS

- Fantasy Faire**
- 24 **Royal Hall**
- 25 **Royal Theatre** (See Times Guide for show times)
- 26 **Pinocchio's Daring Journey***
- 27 **Snow White's Scary Adventures***

DISNEY DINING

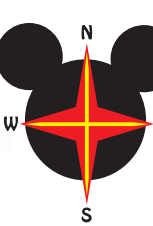
- U** **Maurice's Treats** Sweet and savory twists, and Boysen Apple Freezes.
- V** **Red Rose Tavern** (Limited Time) hosted by Minute Maid®. Burgers, flatbread pizza and veggie options.

- 39 **Storybook Land Canal Boats** (Closed during parades)
- 40 **"it's a small world"** presented by Siemens.
- 41 **Fantasyland Theatre** (See Times Guide for days and times)

- W** **Troubadour Tavern** hosted by Dreyer's™. Bratwurst, pretzel bites, cinnamon apple batons, baked potatoes, and ice cream novelties.

- X** **Edelweiss Snacks** Turkey legs, corn on the cob, chimichangas and frozen beverages.

*Select Fantasyland attractions may close early due to fireworks. Please visit an Information Center for operating hours.



*Attraction operating hours may vary from park hours. Please see location or Information Centers for more information. Entertainment may vary and is subject to change. Please see Times Guide for days and times.

©Disney ©Disney/Pixar ©MARVEL
Tarzan's Treehouse™ TARZAN™ Owned by Edgar Rice Burroughs, Inc. and used by Permission. COPYRIGHT © 1999 Edgar Rice Burroughs, Inc. and Disney Enterprises, Inc. All Rights Reserved. Roger Rabbit's Car Toon Spin ROGER RABBIT Character ©Disney/Amblin Entertainment, Inc. Finding Nemo Submarine Voyage is inspired by Disney•Pixar's Finding Nemo. Indiana Jones™ Adventure and Star Tours: The Adventures Continue ©Disney/Lucasfilm Ltd. &™ Lucasfilm Ltd. Buzz Lightyear Astro Blasters is inspired by Disney•Pixar's Toy Story 2. Attractions and entertainment may be seasonal and are subject to change without notice. Jack Skellington is inspired by Tim Burton's The Nightmare Before Christmas.

- Restrooms
- Companion Restroom
- Automated External Defibrillator
- Resort Lost and Found
- Information Center Guest Relations
- First Aid*
- Wi-Fi Hotspot
- ATMs Presented by Chase
- Baby Care Center Hosted by Huggies®
- Stroller Rentals Hosted by Huggies®
- Locker Rentals
- Charging Locker Rentals
- Pre-charged Battery Kiosk
- Picnic Area
- Wheelchair Rentals
- Package Check Service
- Service Animal Relief Area
- Kennel
- Nikon® Picture Spot
- Disney FASTPASS® Service (Subject to availability)
- Single Rider Service (Subject to availability)
- Height Requirement
- Guest May Remain in Wheelchair/ECV
- Guest Must be Ambulatory
- Guest Must Transfer from Wheelchair/ECV
- Guest Must Transfer from ECV to Wheelchair
- Physical Considerations (See reverse side)
- This attraction may be frightening for children
- Reflective Captioning
- Audio Description: Device Available at Guest Relations
- Handheld Captioning: Device Available at Guest Relations
- Assistive Listening: Device Available at Guest Relations
- Closed Captioning: Activators Available at Guest Relations and location
- Sign Language on Mon. & Sat. Schedule and Times Guides at Guest Relations
- Smoking Area
- Reservations Accepted
- Parade Route
- Disney Vacation Club® Kiosk
- Disney Characters See Times Guide for hours
- Disney PhotoPass® Photographer

*Emergency services available by calling 911.