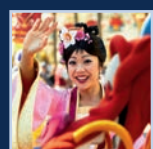


# Disney Magic you won't want to miss!

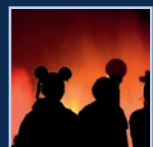
See Times Guide for days and times



**Lunar New Year**  
Disney California Adventure Park  
Discover culturally-inspired food, music, entertainment and festive decorations that signal the start of the new year!



**Mulan's Lunar New Year Procession**  
Paradise Pier  
Make way for a magical march honoring Lunar New Year, family and friendship. Beloved Characters Mulan and Mushu welcome all to witness a spellbinding spectacle for the senses!



**Hurry Home - Lunar New Year Celebration**  
Paradise Pier  
Enjoy a nighttime water show that celebrates family and friendship. This heartwarming tale plays out across a captivating mist screen and features Mulan, Mushu and a new friend, Little Lantern.



**Guardians of the Galaxy – Mission: BREAKOUT!**  
Hollywood Land  
Join Rocket on a thrilling mission to rescue the Guardians of the Galaxy from high up in The Collector's fortress!



**Soarin' Around the World**  
Grizzly Peak  
Feel the wind race across your face during a breezy airborne flight above some of the most breathtaking wonders throughout the world!



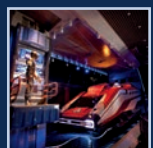
**Radiator Springs Racers**  
Cars Land  
Start your engines! Zoom through the desert landscape of Cars Land, inspired by the Disney•Pixar movie Cars.



**Disney Junior Dance Party!**  
Hollywood Land  
Kids, come shake it at the newest high-energy dance party show, filled with favorite Disney Junior Characters and music!

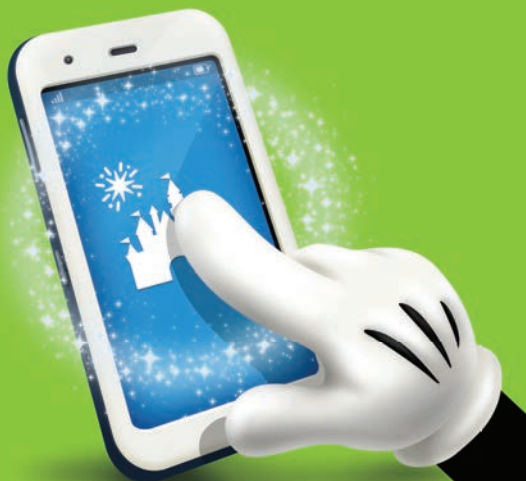
## Disneyland

Separate park admission required



**Star Tours - The Adventures Continue**  
Tomorrowland  
Make the jump to hyperspace during this 3D, motion-simulated flight—with visits to legendary locations from the films!

# Disney MaxPass



A NEW service that gives you digital access to Disney FASTPASS® selections and more!

Reserve digital Disney FASTPASS® selections right from your mobile device\* while in the Parks

AND

Download unlimited Disney PhotoPass® photos\*\* for a day.

With the NEW Disney MaxPass service, you can do both for only \$10 per day, per ticket!

Visit [Disneyland.com/Maps](http://Disneyland.com/Maps) to download the Disneyland® App\*\*\* and purchase the Disney MaxPass service today!



\*Guests are strongly advised to check the day's FASTPASS® entitlement availability and other Park details before purchasing Disney MaxPass as your preferred attractions may not be available at the time of purchase. FASTPASS® entitlements are limited and availability is not guaranteed. FASTPASS® entitlements for entertainment are not available through Disney MaxPass. Disney MaxPass is nonrefundable and is subject to restrictions and change without notice.  
\*\*Disney PhotoPass® Service is subject to the PhotoPass® terms and expiration policy found at <https://disneyland.disney.go.com/photopass-terms-conditions/>. Online registration required. PhotoPass® photos captured during the day your Disney MaxPass is used must be linked to your Disney account. Subject to restrictions and change without notice.  
\*\*\*Message, data and roaming rates may apply. Availability subject to handset limitations and features may vary by handset or service provider. Coverage not available everywhere. If you're under 18, get your parents' permission first.  
©Disney DLR-18-61291

# GUIDEMAP

## Disney CALIFORNIA ADVENTURE™



# LUNAR NEW YEAR

JAN 26 - FEB 18



Enhance your Disneyland Resort visit!  
Get the Disneyland app at [disneyland.com/maps](http://disneyland.com/maps).

Chat with us! @DisneylandToday | Facebook.com/DisneylandToday

## Park rules

Please comply with park rules, signs and instructions, including:

- All bags are subject to inspection prior to admission
- Proper attire is required
- Smoking is allowed only in designated areas
- Weapons are strictly prohibited

Additional details and a complete listing of park rules are available at Guest Relations or [Disneyland.com/ParkRules](http://Disneyland.com/ParkRules)

## Special considerations for attractions

**SAFETY:** Please abide by all safety warnings and notices.

- ⚠ Supervise children at all times. Children under age 7 years must be accompanied by a person age 14 years or older.
- ⚠ For your safety while on attractions, remain seated with hands, arms, feet and legs inside the vehicle. Supervise children.

**Physical considerations on designated attractions:**

**WARNING!** For your safety, you should be in good health and free from high blood pressure, heart, back or neck problems, motion sickness, or other conditions that could be aggravated by this adventure. Expectant mothers should not ride.

## Maximize your time with Disney MaxPass!

- 1 Reserve digital Disney FASTPASS® selections right from your mobile device while in the parks.
- 2 Download unlimited Disney PhotoPass® photos for a day.

Download the Disneyland app at [Disneyland.com/maps](http://Disneyland.com/maps) to get details and purchase Disney MaxPass.

*FastPass selections are limited and availability is not guaranteed. Disney MaxPass is nonrefundable. Message, data and roaming rates may apply for app usage, and availability and features may vary and are subject to limitations. Coverage not available everywhere. If you are under 18, get your parents' permission first.*

**Disney FASTPASS® Cut the wait time in 3 easy steps:**

Enjoy popular attractions with minimal wait.

- 1 Insert your park ticket or Annual Passport into the FASTPASS® machine and you'll receive a FASTPASS® reminder ticket as a receipt.
- 2 If you have purchased Disney MaxPass service, you can reserve digital Disney FASTPASS® from your mobile device.
- 3 Come back during your return time and scan the same park ticket or Annual Passport.

## Capturing the magic is as easy as 1-2-3! PhotoPass®

- 1 Smile for PhotoPass photographers found around the Parks or while onboard select attractions.
- 2 Link and preview photos in the Disneyland app by entering the:
  - ID found on the back of your Disney PhotoPass® card
  - 8-character ID found on the monitors at the photo preview wall of attraction exits.
- 3 Purchase photo downloads at [DisneyPhotoPass.com](http://DisneyPhotoPass.com) or buy Disney MaxPass for unlimited downloads for the day.

\*Photos available online for 45 days. **Online registration required.**  
**Disney MaxPass is nonrefundable.**



**Smoking** For the comfort of all our Guests, smoking is allowed in designated areas only. At Disney California Adventure the smoking location can be found near Grizzly River Run in Grizzly Peak.



**Mickey Check** Look for this symbol at various locations on kids' meals and other items that meet Disney Nutrition Guidelines. Visit [www.disneymickeycheck.com](http://www.disneymickeycheck.com) for more information.



**Be Green!** Recycling containers throughout the parks now accept plastic, paper, cans & glass.



**Package Check Service** Shop and check your purchases for pickup later in the day at Elias & Co. (Buena Vista Street). Resort Hotel Guests may have purchases delivered to Bell Services for next-day pickup after 7 a.m. Certain restrictions apply.



**Resort Lost and Found** Inquire at Resort Lost and Found, located west of the Disneyland® Park Main Entrance.

**Lost Guests** Lost kids will be escorted to Lost Children at the Baby Care Center. Guests 14 years of age and over may leave a written message at Guest Relations.

**Services for Guests with Disabilities** A guide for Guests with Disabilities is available at Information Centers (I on the map). For more information about available services, visit Guest Relations in *Disney California Adventure*® Park.

**Sundries** Available at Elias & Co. on Buena Vista Street.



Any time you see someone with a Disney nametag, just ask! They're happy to answer your questions.



**Strollers** Rentals are available in limited quantities. **Please take all personal belongings with you when leaving your stroller unattended.**



**Wheelchairs** A limited number of wheelchairs and Electric Conveyance Vehicles are available to rent. Rental fee and refundable deposit required. Guests must be at least 18 years of age to rent or operate an Electric Conveyance Vehicle.



**Disneyland® Kennel Club** Located east of the Disneyland® Park Main Entrance. No overnight facilities.



**Charging Lockers** Rental available to secure and charge many personal electronic devices.



**Pre-Charged Battery Kiosk** Guests have the opportunity to swap or purchase a pre-charged portable battery and connecting cords for their mobile device.



**Payment Options** The Disneyland® Resort accepts Disney® Visa® Cards, Disney Rewards Redemption Card, Disney Gift Card, Visa®, MasterCard®, Discover®, American Express®, Diners Club®, JCB®, traveler's checks, cash and Disney Dollars.



**Travel Tips** Should your vehicle become disabled during your visit, the Automobile Club of Southern California provides complimentary towing and flat-tire services to nonmembers during park hours.



Use the *Disney Gift Card* instead of carrying cash. It's easy and can be used throughout the resort. Start with any amount from \$15 to \$1,000, and reload it at any time. Available for purchase throughout the resort. Visit [DisneyGiftCard.com](http://DisneyGiftCard.com) for terms.

**Disney Pins** At Trolley Treats, Kingswell Camera Shop, and Laod Bhang's Pin Cart.

Information subject to change without notice.

## Here are 4 good ways to safer days!

- 1 No stampeding (Don't run)
- 2 Keep your arms, hooves, tusks and tails inside ride vehicles (and your hands, feet and legs)
- 3 On rides, stay seated with your tail down (You get this one, right?)
- 4 Keep your paws behind the yellow line (Don't cross the yellow safety lines at attractions)





## Buena Vista Street

### ATTRACTIONS

- 1 Red Car Trolley

### DISNEY DINING

- A** Mortimers Market Fresh fruit, bottled beverages and juices.
- B** Clarabelle's Hand-Scooped Ice Cream hosted by Dreyer's™.
- C** Fiddler, Fifer & Practical Cafe Starbucks® Espresso and Specialty Beverages, Artisan breakfast sandwiches and wraps, salads and gourmet sandwiches.
- D** Carthay Circle Restaurant Italian Southern California modern cuisine, wine and cocktails. (See World of Color Viewing Options)
- E** Carthay Circle Lounge Cocktails, non-alcoholic specialties and appetizers.

## Hollywood Land

### ATTRACTIONS

- 2 Disney Junior Dance Party presented by Pull-Ups®
- 3 Sunset Showcase Theatre
- Disney Animation
- 4 Sorcerer's Workshop
- 5 Anna & Elsa's Royal Welcome
- 6 Animation Academy
- 7 Turtle Talk with Crush
- 8 Red Car Trolley
- 9 The Hollywood Backlot Stage
- 10 Monsters, Inc. Mike & Sulley to the Rescue!
- 11 Frozen - Live at the Hyperion
- 12 Guardians of the Galaxy - Mission: BREAKOUT!

- 13 It's Tough to be a Bug!
- 14 Francis' Ladybug Boogie
- 15 Flik's Flyers
- 16 Tuck and Roll's Drive 'Em Buggies
- 17 Princess Dot Puddle Park
- 18 Heimlich's Chew Chew Train

### DISNEY DINING

- F** Award Wieners Street-style hot dogs and sausages.
- G** Schmoozies Epic doughnuts and fruit smoothies.
- H** Fairfax Market Healthy snacks and bottled beverages.
- I** Studio Catering Co. Street Tacos and nachos

## "a bug's land"

### ATTRACTIONS

- 13 It's Tough to be a Bug!
- Flik's Fun Fair
- 14 Francis' Ladybug Boogie
- 15 Flik's Flyers
- 16 Tuck and Roll's Drive 'Em Buggies
- 17 Princess Dot Puddle Park
- 18 Heimlich's Chew Chew Train

## Cars Land

### ATTRACTIONS

- 19 Mater's Junkyard Jamboree
- 20 Luigi's Rollickin' Roadsters
- 21 Radiator Springs Racers

### DISNEY DINING

- J** Fillmore's Taste-In Fresh fruit, bottled beverages and juices.
- K** Cozy Cone Motel Flavored popcorn, frozen beverages, soft-serve ice cream and chili cone queso.
- L** Flo's V8 Café Rotisserie sandwiches, salads, home-style sides and house-made pies.

## Grizzly Peak

### ATTRACTIONS

- 22 Redwood Creek Challenge Trail
- 23 Grizzly River Run
- 24 Soarin' Around the World

### DISNEY DINING

- M** Smokejumpers Grill Burgers, chicken sandwiches, fries and drinks.
- N** Refreshment Point hosted by Coca-Cola®
- O** Storytellers Café at Disney's Grand Californian Hotel & Spa; Chip n' Dale Critter Breakfast, hearty home-style favorites for lunch and choice of à la carte or buffet dinner.

## Pacific Wharf

### ATTRACTIONS

- 25 The Bakery Tour
- P** Pacific Wharf Distribution Co. featuring Karl Strauss handcrafted beers.
- Q** Cocina Cucamonga Mexican Grill Tacos, burritos, fire-grilled chicken and more!
- R** Lucky Fortune Cookery Stir-fry flavors from Asia.
- S** Rita's Baja Blenders Frozen margaritas & blended non-alcoholic specialties.
- T** Pacific Wharf Café Salads, soups and sandwiches featuring Boudin Bread.

### DISNEY DINING

- U** Ghirardelli® Soda Fountain and Chocolate Shop Chocolatey goodness and incredible ice cream!
- V** Alfresco Tasting Terrace Featuring the 'Disney Family of Wines' and appetizers.
- W** Mendocino Terrace Wine and snacks.
- X** Wine Country Trattoria
- Y** Sonoma Terrace California Craft beer and wine.



## Paradise Pier

### ATTRACTIONS

- 26 King Triton's Carousel
- 27 Toy Story Midway Mania!
- 28 Silly Symphony Swings
- 29 Goofy's Sky School
- 30 Jumpin' Jellyfish
- 31 Golden Zephyr
- 32 The Little Mermaid ~Ariel's Undersea Adventure
- 33 World of Color

### DISNEY DINING

- Z** Bayside Brews Pretzels and beer.
- AA** Boardwalk Pizza & Pasta Pizza, pasta and salads.
- BB** Paradise Garden Grill Marinated grilled skewers.
- CC** Corn Dog Castle Corn dogs.

Area closed to thru traffic

Select Paradise Pier attractions close early due to World of Color. Please visit an Information Center for operating hours.

### LUNAR NEW YEAR

Gather with family and friends for our Lunar New Year Celebration! Come welcome in the Year of the Dog at our colorful festival of live entertainment, crafts, cultural foods and Disney characters!

### World of Color Viewing Options\*

**Show Ticket Distribution**  
Available near The Little Mermaid - Ariel's Undersea Adventure.

**Carthay Circle Restaurant**  
Dining packages include a ticket for access to center stage viewing. Make reservations by stopping by or calling 714-781-DINE (3463).

**Wine Country Trattoria**  
Dining packages include a ticket for access to reserved viewing. Make reservations by stopping by or calling 714-781-DINE (3463).

**Non-ticketed viewing is available around Paradise Bay.**

\*Show Tickets and dining packages are limited.

- Restrooms
  - Companion Restroom
  - Automated External Defibrillators
  - Resort Lost and Found
  - Information Center Guest Relations
  - First Aid\*
  - Wi-Fi Hotspot
  - ATMs Presented by Chase
  - Baby Care Center Hosted by Huggies®
  - Stroller Rentals Hosted by Huggies®
  - Locker Rentals
  - Charging Locker Rentals
  - Pre-charged Battery Kiosk
  - Picnic Area
  - Wheelchair Rentals
  - Package Check Service
  - Service Animal Relief Area
  - Kennel
  - Nikon® Picture Spot
  - Disney FASTPASS® Service (Subject to availability)
  - Single Rider Service (Subject to availability)
  - Height Requirement
  - Guest May Remain in Wheelchair/ECV
  - Guest Must be Ambulatory
  - Guest Must Transfer from Wheelchair/ECV
  - Guest Must Transfer from ECV to Wheelchair
  - Physical Considerations (See reverse side)
  - The seating and restraints of this attraction may prohibit Guests of certain body shapes or sizes from riding
  - This attraction may be frightening for children
  - Reflective Captioning
  - Audio Description: Device Available at Guest Relations
  - Handheld Captioning: Device Available at Guest Relations
  - Assistive Listening: Device Available at Guest Relations
  - Closed Captioning: Activators Available at Guest Relations and location
  - Sign Language on Mon. & Sat. Schedule and Times Guides at Guest Relations
  - Smoking Area
  - Reservations Accepted
  - Parade Route
  - Disney Vacation Club® Kiosk
  - Disney Characters See Times Guide for hours
- \*Emergency services available by calling 911.

©Disney ©Disney/Pixar ©MARVEL  
It's Tough to be a Bug! and "a bug's land" are inspired by Disney•Pixar's A Bug's Life. Monsters, Inc. Mike & Sulley to the Rescue! is inspired by Disney•Pixar's Monsters, Inc. Toy Story Midway Mania! is inspired by Disney•Pixar's Toy Story films. Turtle Talk with Crush is inspired by Disney•Pixar's Finding Nemo. Attractions and entertainment may be seasonal and are subject to change without notice.